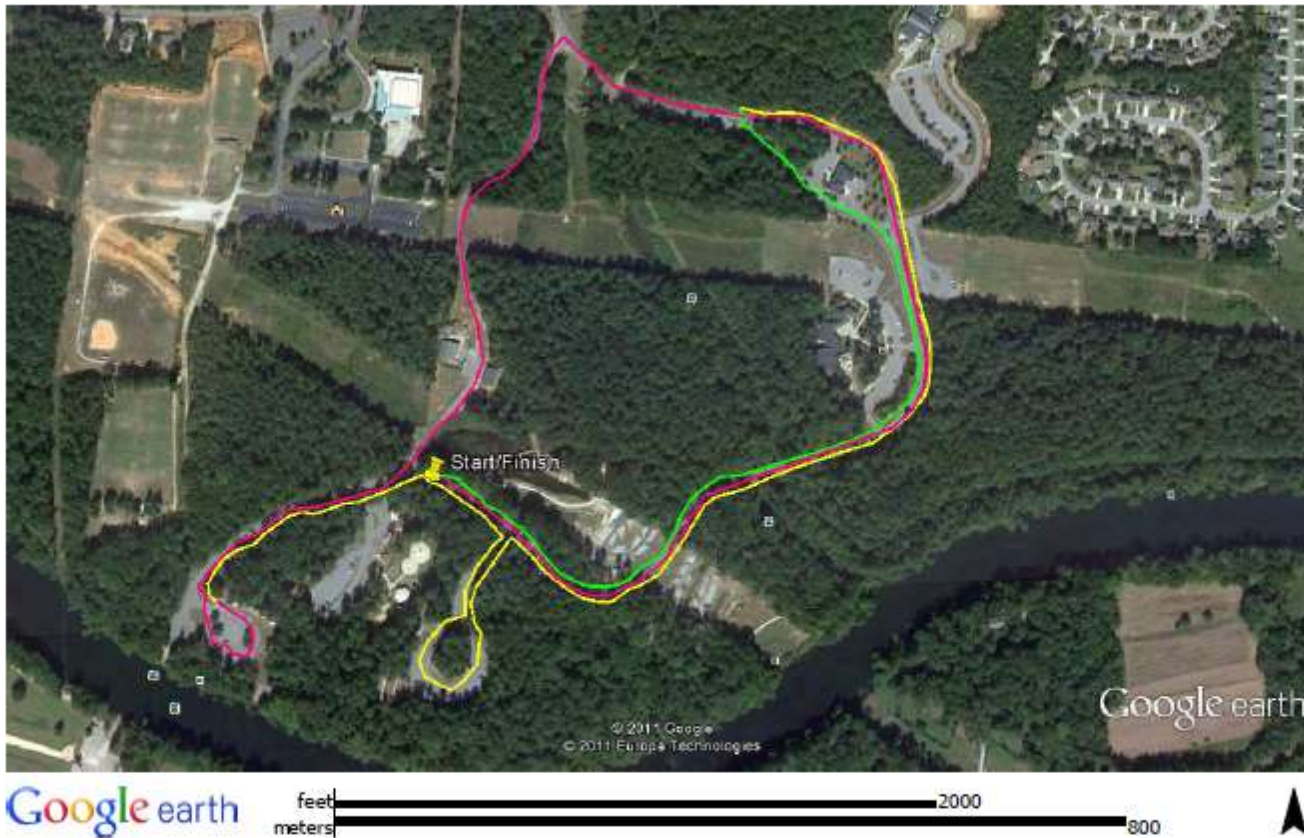




**New Balance Girls on the Run 5k**  
**Presented by Moore Orthopaedic**  
**Saluda Shoals Park**



- From the start line, runners will follow the path (shown as a pink link) to complete a loop of the course
- Runners will then loop around the boat launch area to start another loop of the course (represented by the yellow line)
- Following the yellow line, the runners will make a small loop around a parking area (water stop) and then continue out along the path.
- At the fork in the road, runners will turn back and run in the opposite direction toward the finish line (green line)

★ ***Runners should stay to the right of the cones at all times! Course monitors will be present at all potentially confusing turns.***